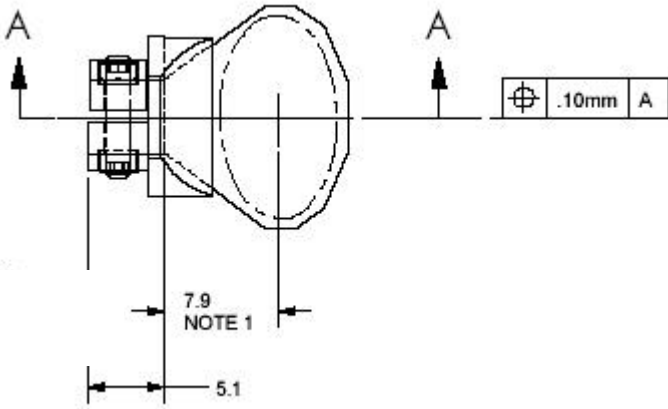


6230H/6231HC Mounted 8mm Mirror Outline Drawing

Mounted 8mm X Mirror Outline Drawing

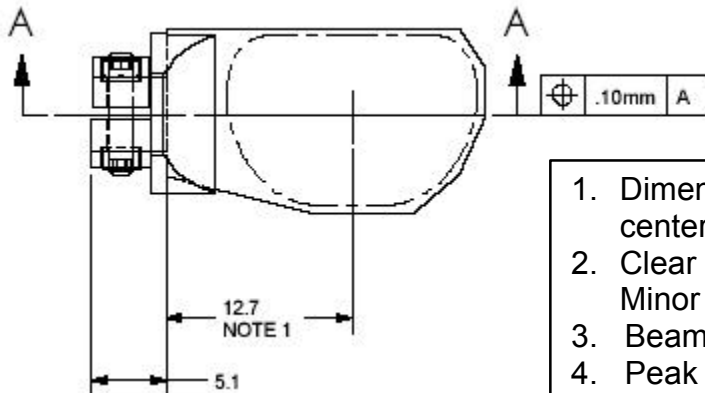
$$J = .291 \text{ g*cm}^2$$



1. Dimension from the end of the shaft to the center of the clear aperture
2. Clear aperture: Major axis = 13.9 mm
Minor axis = 8mm
3. Beam aperture = 8mm
4. Peak to peak intended opt scan angle = 40°
5. Angles of incidence = $45^\circ \pm 10.0^\circ$ mech.
6. Screw size = #0-80 x 1/4 inch lg
7. Nut size = #0-80 x 3/32 inch across flats
8. Hex key size = 0.050" flat end allen only
9. Recommended screw torque = .23 N*m
(2.0 in* lbs)

Mounted 8mm Y Mirror Outline Drawing

$$J = .325 \text{ g*cm}^2$$



1. Dimension from the end of the shaft to the center of the clear aperture
2. Clear aperture: Major axis = 17.2mm
Minor axis = 11.6mm
3. Beam aperture = 8mm
4. Peak to peak intended opt scan angle = 40°
5. Angles of incidence = $36^\circ \pm 10.0^\circ$ mech.
6. Screw size = #0-80 x 1/4 inch lg
7. Nut size = #0-80 x 3/32 inch across flats
8. Hex key size = 0.050" flat end allen only
9. Recommended screw torque = .23 N*m
(2.0 in* lbs)