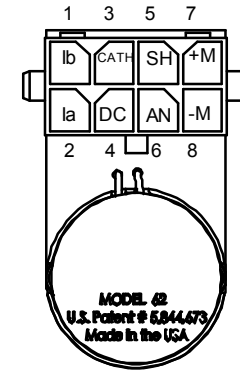
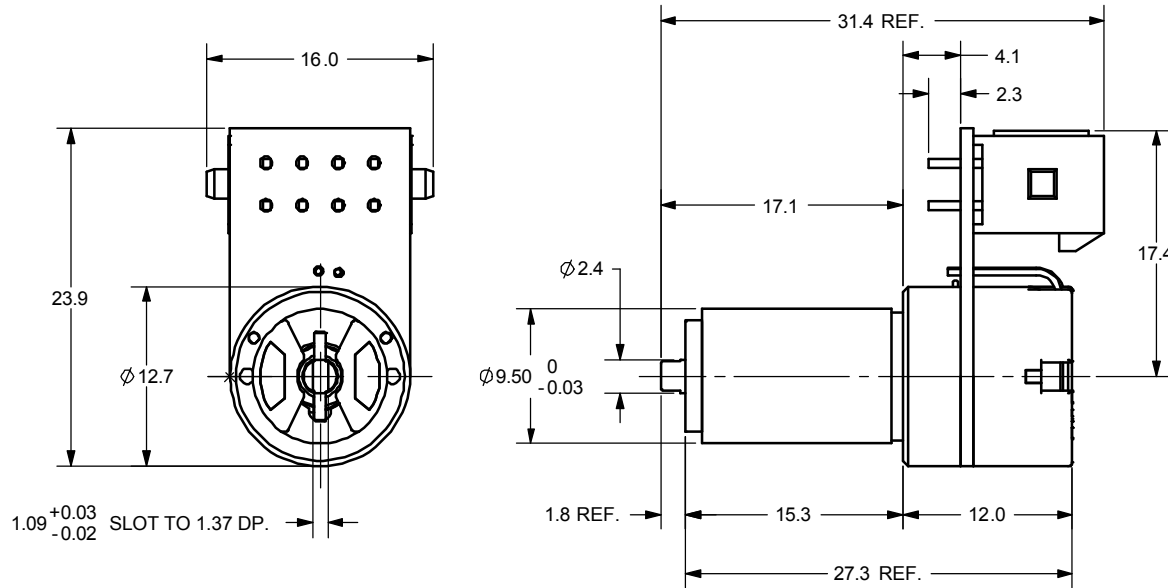


REVISIONS				
ECO	REV	DESCRIPTION	APPR	DATE



PIN #	DESCRIPTION
1	lb
2	la
3	AGC RETURN
4	DIODE COMMON
5	SHIELD
6	AGC INPUT
7	+ MOTOR
8	- MOTOR

(ALL DIMENSIONS ARE IN mm)
TOL: .X = ±.3
MASS = 14.0 GRAMS

These drawings and specifications are the property of CAMBRIDGE TECHNOLOGY and shall not be reproduced, or copied, or used as the basis for the manufacture, or sale of apparatus without the written permission of CAMBRIDGE TECHNOLOGY, INC.

UNLESS OTHERWISE SPECIFIED DIMENSIONS ARE IN INCHES TOLERANCES XX± .010 ANGLES± 0°-30' .XXX± .005 .XXXX± .0005 [] INDICATES mm SURFACE ROUGHNESS 63/√ BREAK ALL SHARP EDGES	DRN		CAMBRIDGE TECHNOLOGY, INC. 109 SMITH PLACE CAMBRIDGE, MA 02138 - USA
	ENG	JE 06/15/04	
	APPR		
	PROJECTION		
	DRAWING SIZE: B		TITLE
			6200HB OUTLINE DWG
MATERIAL	N/A		DRW. NO.
6200HB			D06039
FINISH	N/A		REVISION
USED ON			B
		SCALE 2:1	SHEET 1 OF 1

MODEL NAME: D62XXH