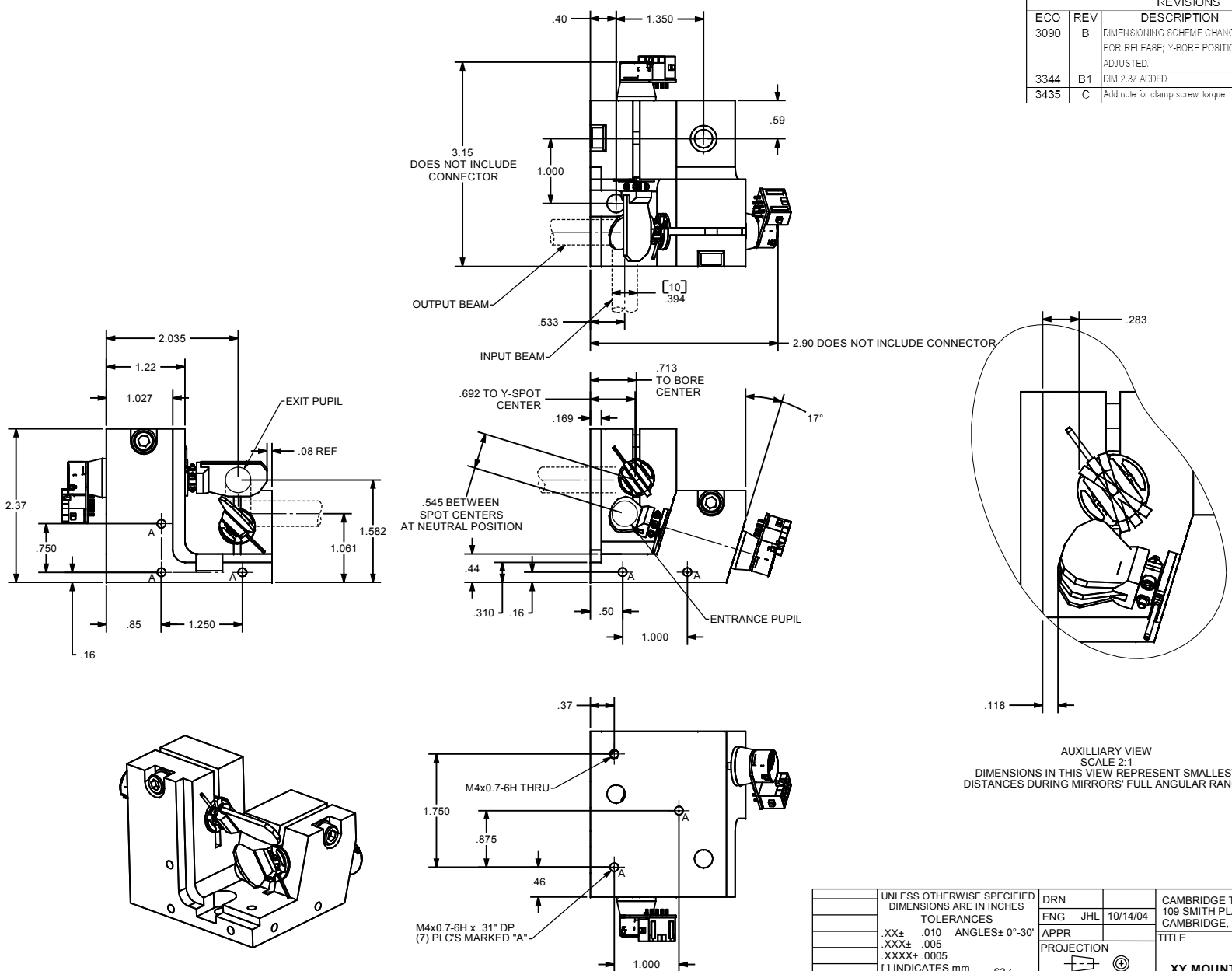


REVISIONS				
ECO	REV	DESCRIPTION	APPR	DATE
3090	B	DIMENSIONING SCHEMF CHANGED FOR RELEASE; Y-BORE POSITION ADJUSTED.	JHL	Jun-05
3344	B1	DIM 2.37 ADDED	JHL	Mar-06
3435	C	Add note for clamp screw torque	JZ	05/15/06



NOTES:  
 1. ALL DIMENSIONS ARE FOR REFERENCE ONLY.  
 2. RECOMMENDED X-Y MOUNT CLAMP SCREW TORQUE = 53 in\*lb (5.99 N\*m).  
 3. CLAMP SCREW TORQUE TOLERANCE = ± 10%.

These drawings and specifications are the property of CAMBRIDGE TECHNOLOGY and shall not be reproduced, or copied, or used as the basis for the manufacture, or sale of apparatus without the written permission of CAMBRIDGE TECHNOLOGY, INC.

UNLESS OTHERWISE SPECIFIED DIMENSIONS ARE IN INCHES	DRN	ENG	JHL	10/14/04	CAMBRIDGE TECHNOLOGY, INC. 109 SMITH PLACE CAMBRIDGE, MA 02138 - USA
TOLERANCES	APPR	PROJECTION			
.XX± .010 ANGLES± 0°-30'		[Symbol]			6220 XY MOUNT INTERFACE, RH Ø10mm BEAM, 40° OPT
.XXX± .005		DRAWING SIZE: C			
.XXXX± .0005		MATERIAL			REVISION
[ ] INDICATES mm		6102210R40			D06292 C
SURFACE ROUGHNESS 63/		USED ON			SCALE 1:1
BREAK ALL SHARP EDGES					SHEET 1 OF 1