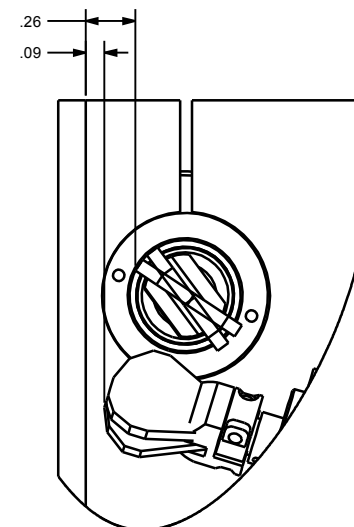
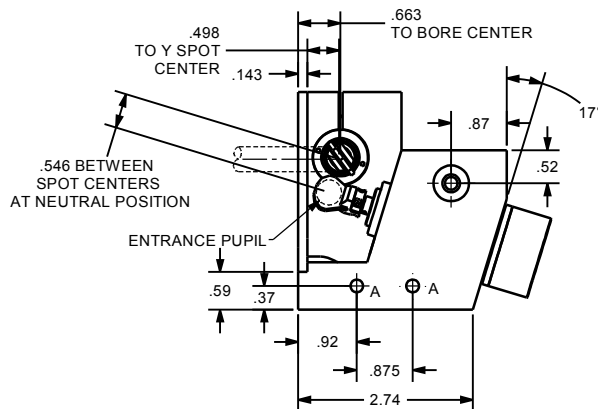
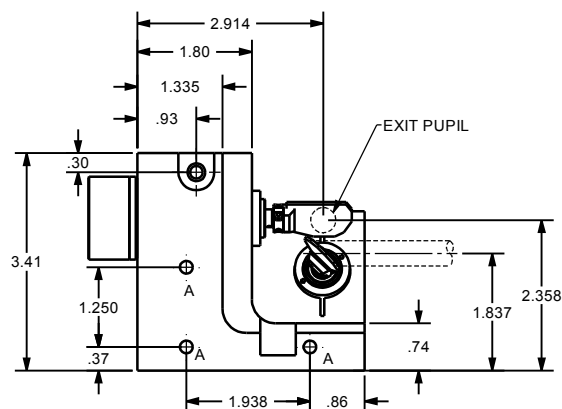
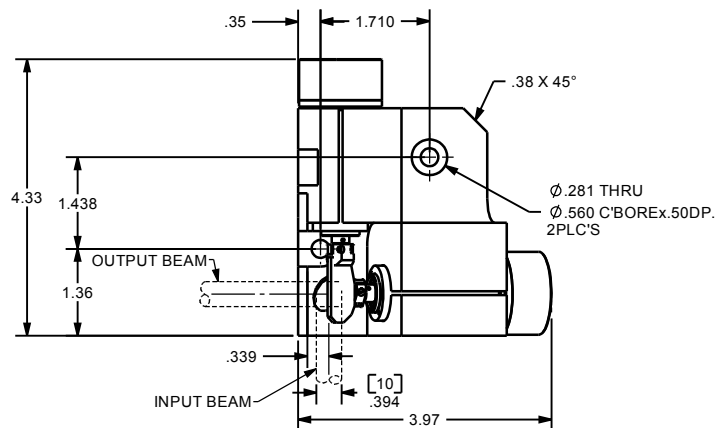
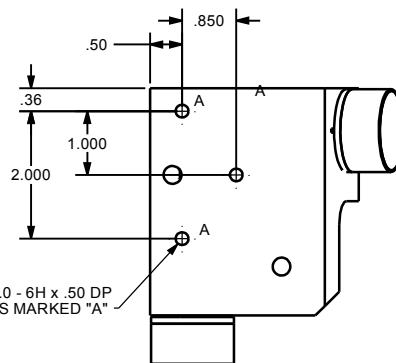
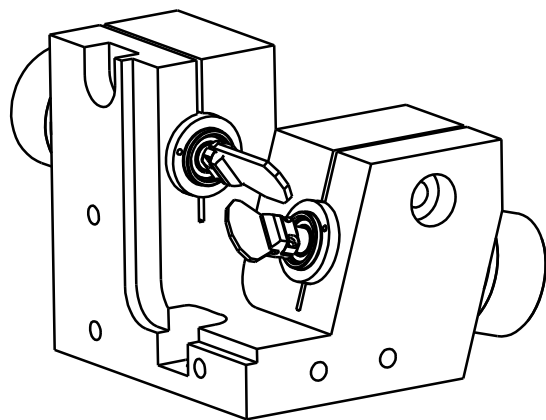


REVISIONS				
ECO	REV	DESCRIPTION	APPR	DATE
3590	C	CONVERT DRAWING TO SOLIDWORKS, UPDATE DIMENSIONS TO STANDARD FORMAT	JZ	Sep-06



AUXILLIARY VIEW  
SCALE 2:1  
DIMENSIONS ON THIS VIEW REPRESENT SMALLEST DISTANCES DURING MIRRORS' FULL ANGULAR RANGE



- NOTES:  
 1. ALL DIMENSIONS ARE FOR REFERENCE ONLY.  
 2. RECOMMENDED XY MOUNT CLAMP SCREW TORQUE: 115 in\*lb (12.99 N\*m)  
 3. CLAMP SCREW TORQUE TOLERANCE =  $\pm 5\%$ .

These drawings and specifications are the property of CAMBRIDGE TECHNOLOGY and shall not be reproduced, or copied, or used as the basis for the manufacture, or sale of apparatus without the written permission of CAMBRIDGE TECHNOLOGY, INC.

UNLESS OTHERWISE SPECIFIED DIMENSIONS ARE IN INCHES TOLERANCES		DRN	CAMBRIDGE TECHNOLOGY, INC.
		ENG JZ	109 SMITH PLACE
		09-27-06	CAMBRIDGE, MA 02138 - USA
		APPR	TITLE
		PROJECTION	<b>6230</b>
		DRAWING SIZE: C	<b>XY MOUNT INTERFACE, RH</b>
			<b>Ø10mm BEAM, 40° OPT.</b>
		DRW. NO.	REVISION
		<b>D04654</b>	<b>C</b>
		SCALE 2:3	SHEET 1 OF 1